

## Braille Cell

### Based on Piezo Bender Technology

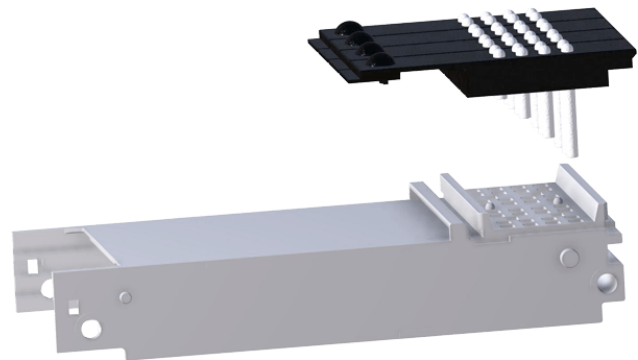
Date: 2020  
Page: 1 / 1

### Johnson Matthey Piezo Products

Designed a compact and cost-efficient Braille cell, incorporating Piezo bending actuators, mechanics and basic electronic parts required for connecting and driving.

#### The Design:

- **Service friendly**  
easy, time and cost saving service, dismantling and cleaning
- **Pins kept by retainer**  
from falling out during cell dismantling
- **Compact in size**  
to fit into many device designs
- **Engineered for cost efficiency**  
4x8=32 Pins in a single module allow to streamline components, production processes and assembly
- **Overall robust design**  
based on well-known Piezo ceramic bending actuators



### About Johnson Matthey Piezo Products:

What makes Johnson Matthey Piezo Products unique is that we offer 3 value-adding competences.

- We produce Piezoceramics, designed for maximized performance and durability.
- We join these Piezoceramics to Piezo components, such as bending actuators.
- Finally, we combine these Piezo components with mechanics and electronics to modules, devices and complete systems with outstanding quality.

In close consultation with our partners we jointly decide on the best solution for their applications.

\*\*\*